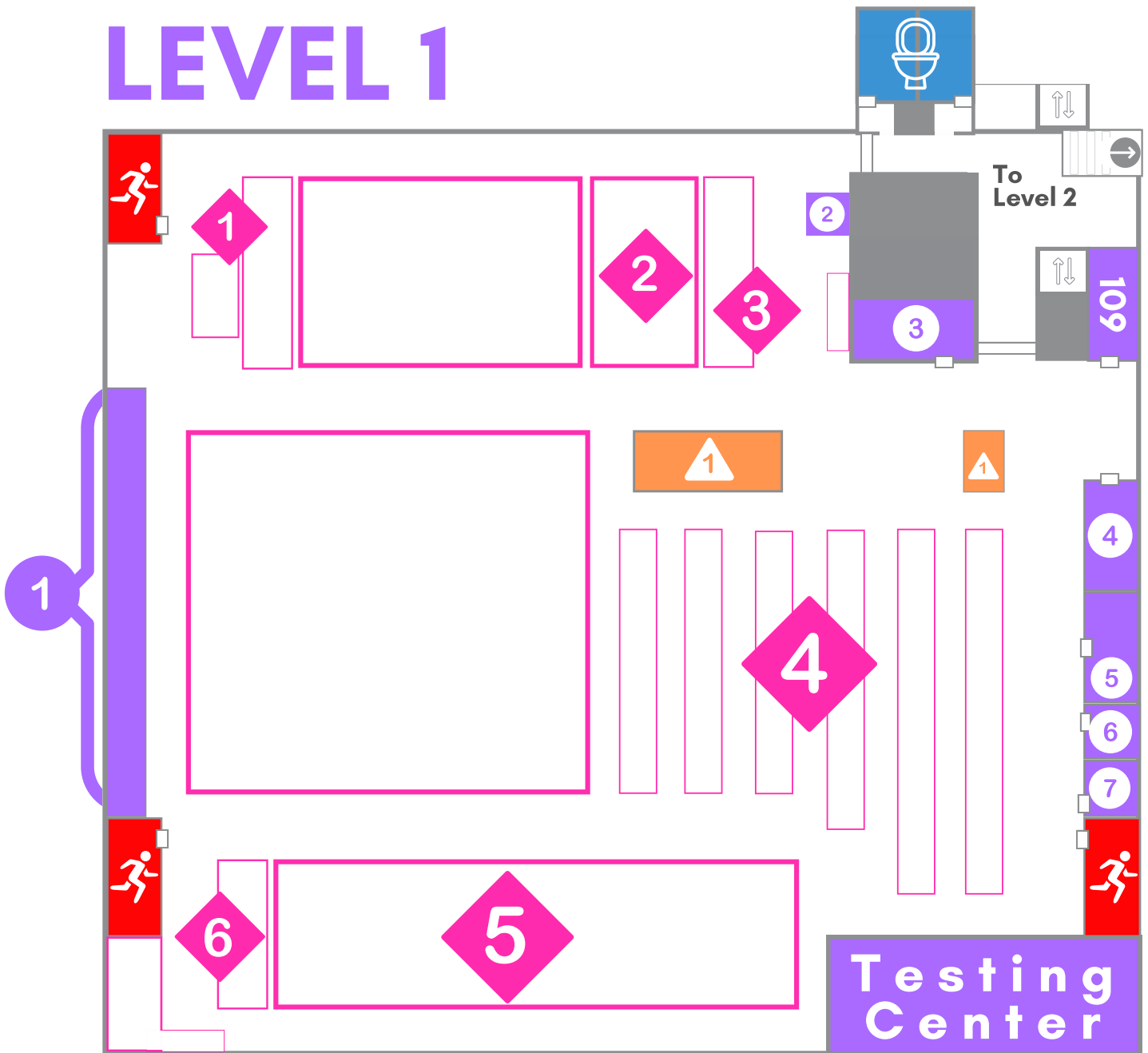


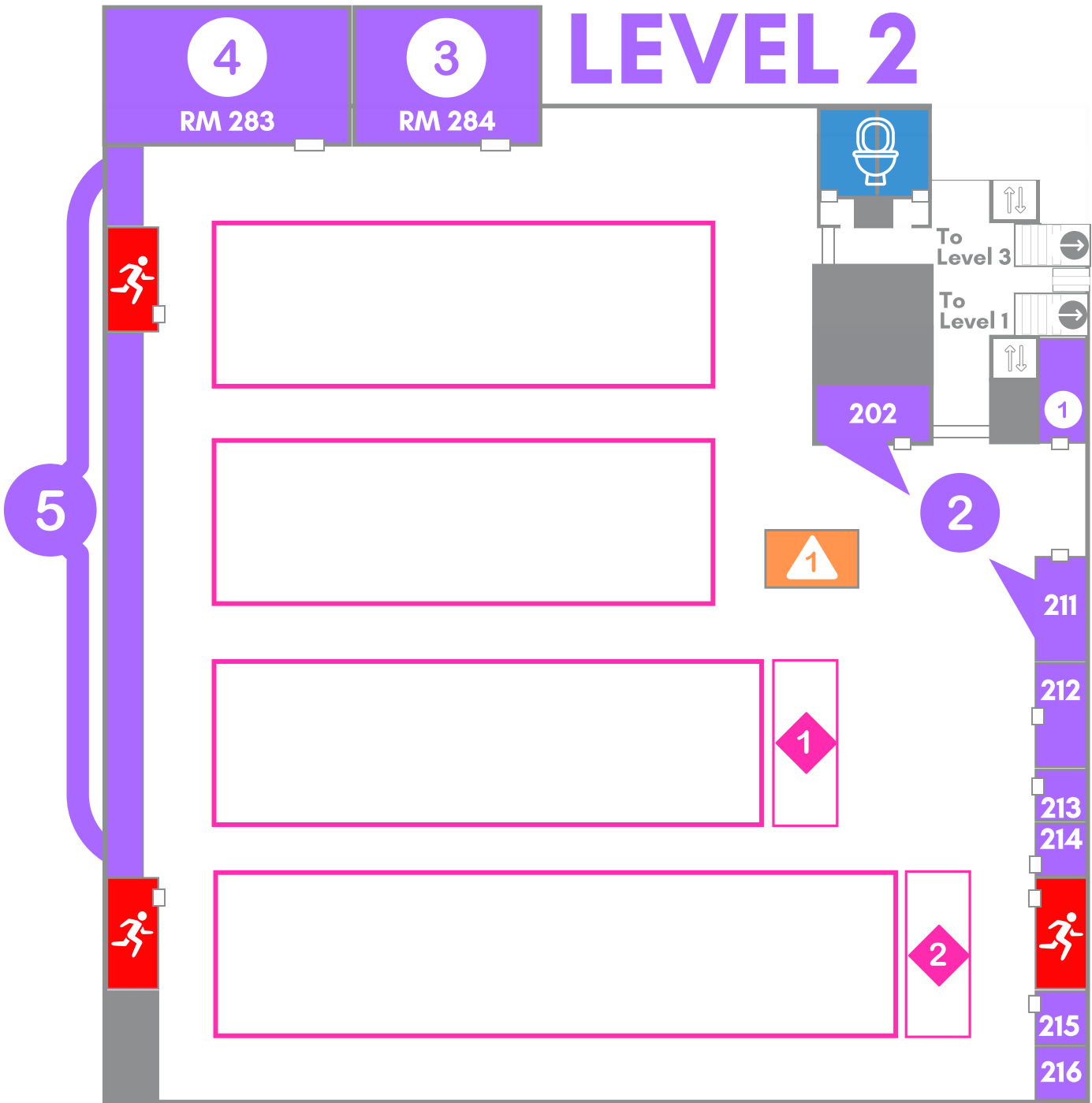
LEVEL 1



- | | | |
|--|--|---|
| 1 Study Carrels | 6 Virtual Reality Room (Rm. 113) | 4 Gov. Docs Microfilm/Microfiche |
| 2 Microfiche/Microfilm Reader | 7 Studio Support Services (Rm. 114) | 5 Compact Shelving Gov. Docs |
| 3 One Button Studio (Rm. 102) | 1 Newspapers | 6 Oversized Section |
| 4 Lightboard Studio (Rm. 111) | 2 Music Scores | 1 Computers |
| 5 Editing & Data Stations (Rm. 112) | 3 Raoul CDs | |

KEY	Restrooms	Emergency Exit	
Books	Display Cases	Elevators	
		Doors	

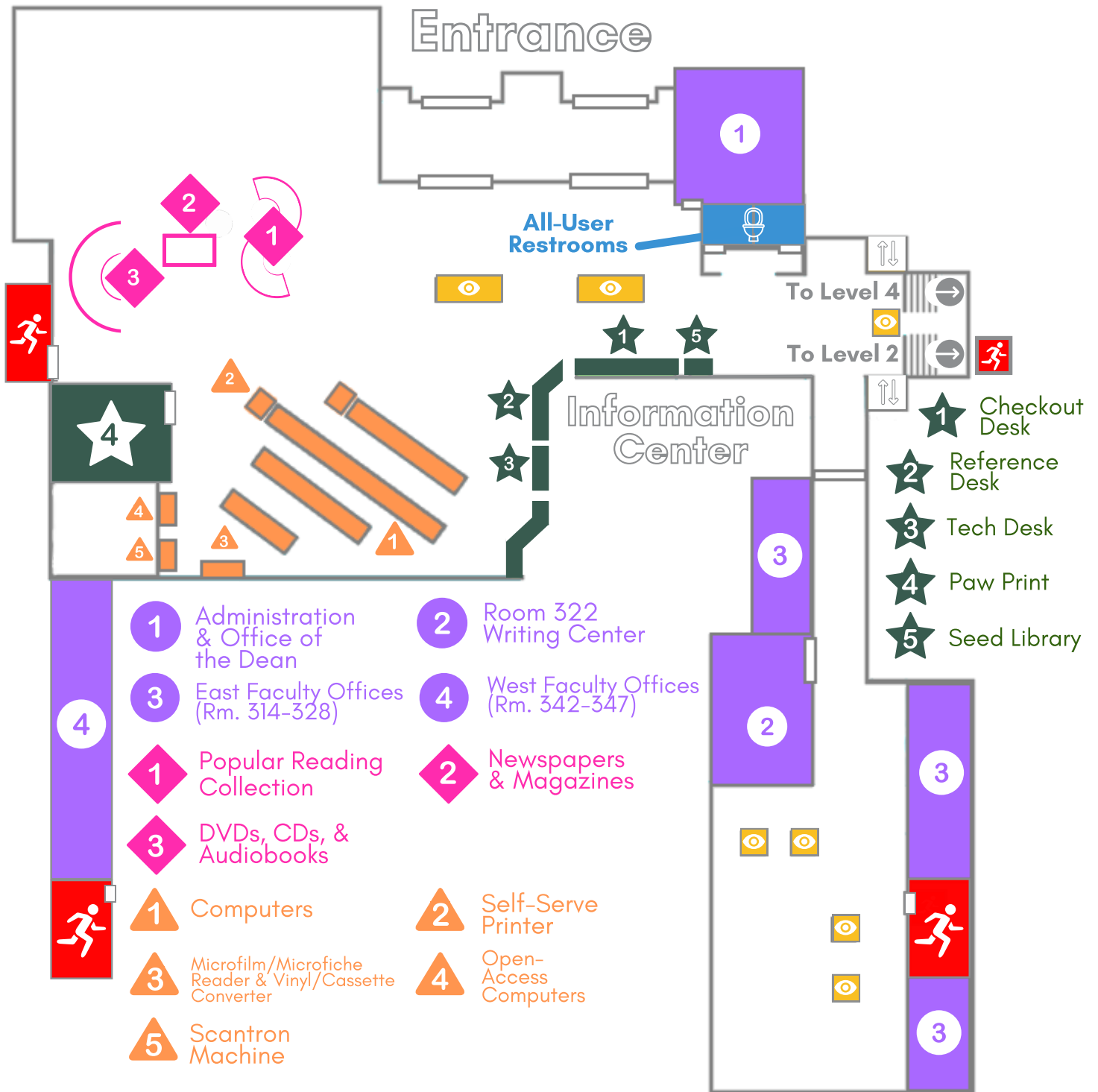
LEVEL 2



- 1 Accessible Technology Room
- 2 (East side) Reservable Study Rooms
- 1 Children's Collection
- 3 Buckhous Room
- 4 Student Learning Center
- 2 Oversized Section
- 5 Study Carrels
- 1 Computers

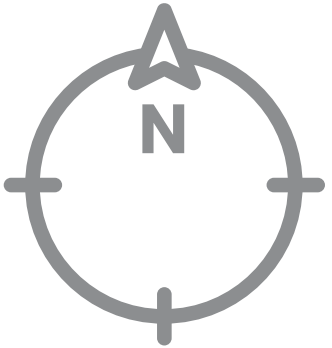
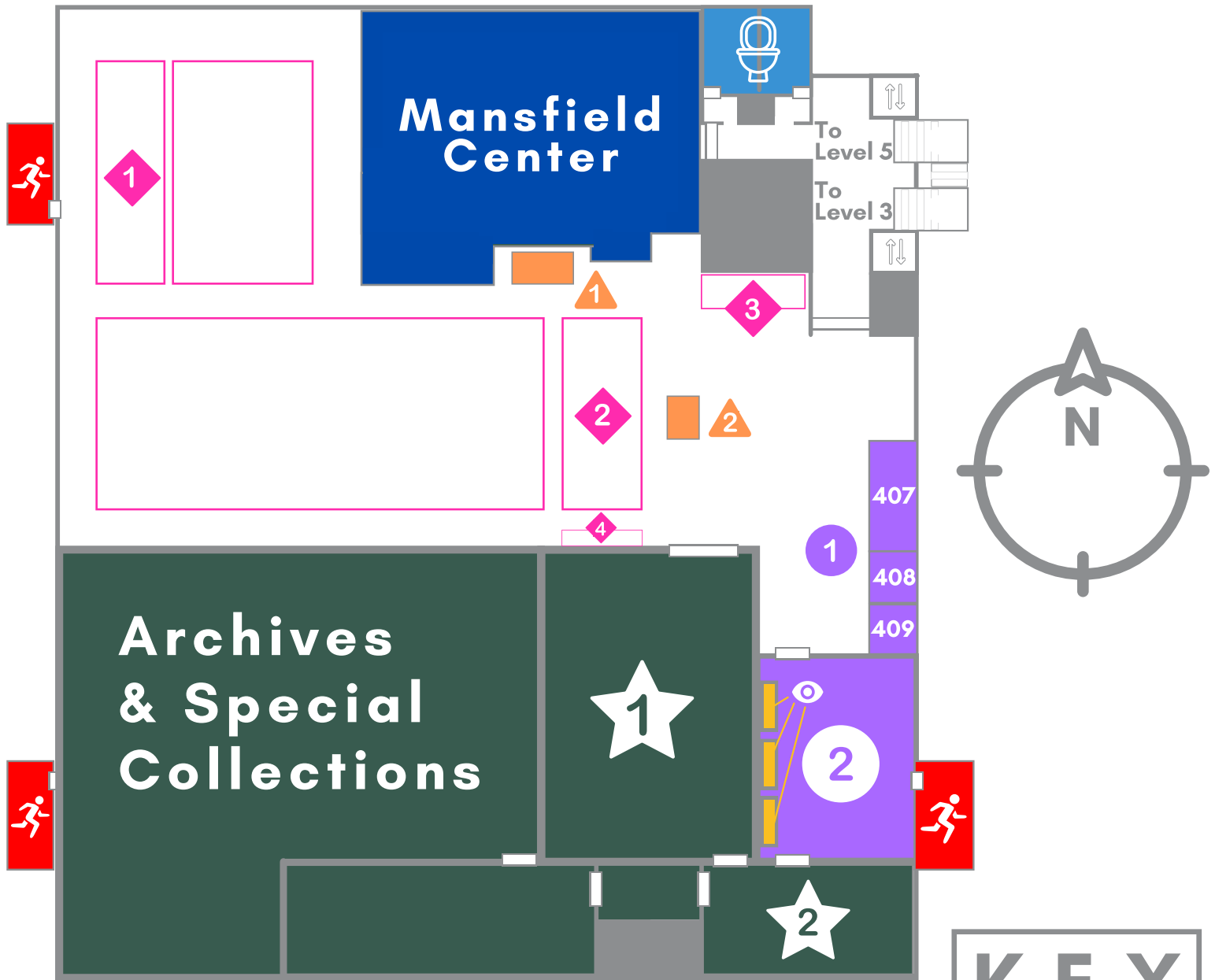
KEY	Restrooms	Emergency Exit	
Books	Display Cases	Elevators	Doors

LEVEL 3



K E Y	Restrooms	Emergency Exit	
Books	Display Cases	Elevators	

LEVEL 4



1 (Numbered Rooms)
Reservable Study
Rooms

1 Oversized Section

3 Raoul CDs

1 VHS, DVD, and Blu-ray player

1 Reading Room and
Montana Collection

2 Theta Rho

2 Music Scores

4 ASC: Card Index for Historic
Photos and the *Montana
Kaimin*; Historic Photos; Oral
History Transcripts and Audio

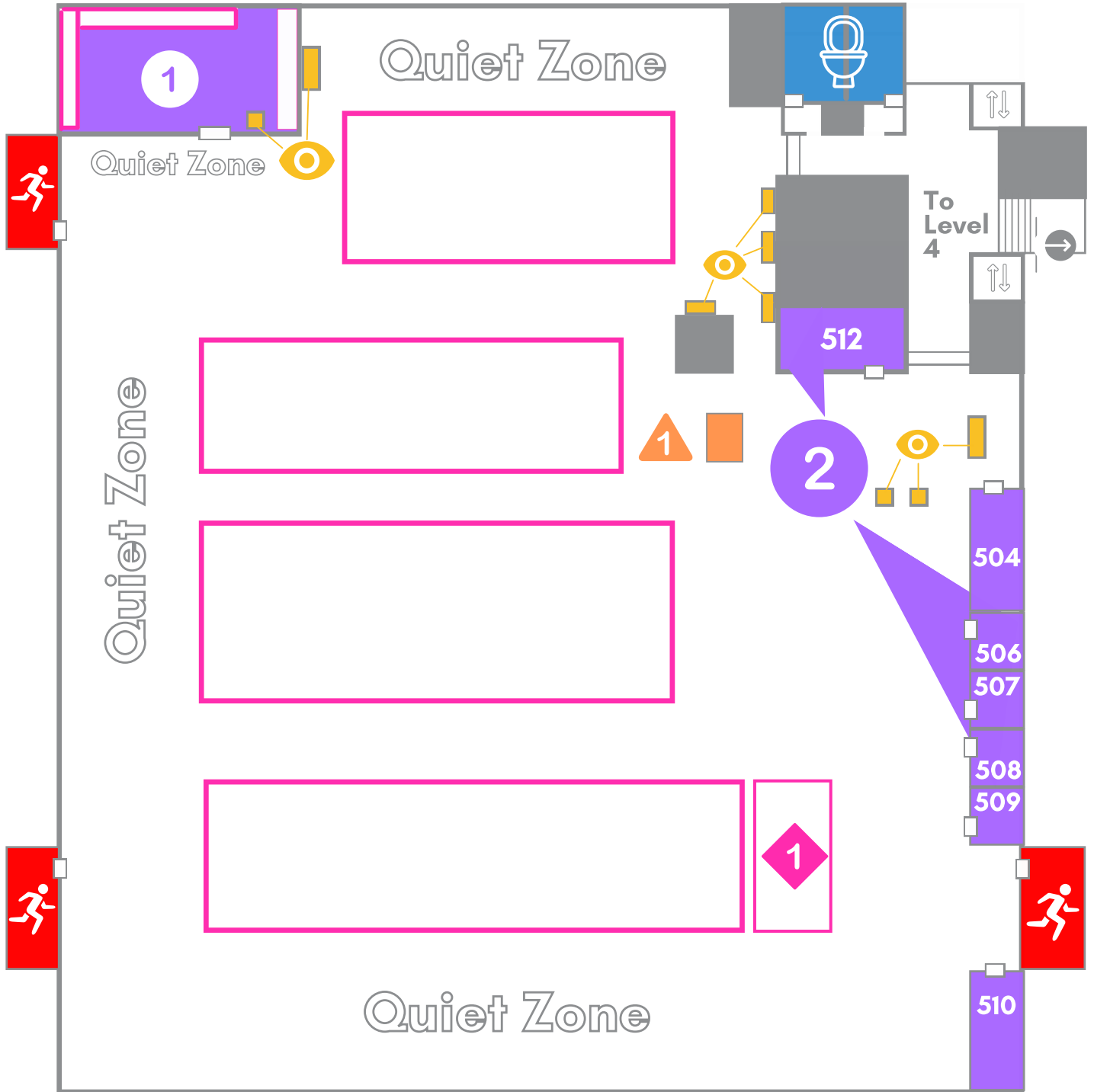
2 Computers

2 Archives Teaching
Room

KEY

-  Restrooms
-  Display
Cases
-  Emergency
Exit
-  Elevators
-  Books
-  Doors

LEVEL 5



- 1 Poetry Corner
- 2 (Numbered Rooms) Reservable Study Rooms
- 1 Oversized Section
- 1 Computers

KEY	Restrooms	Emergency Exit	
Books	Display Cases	Elevators	